



ANNUAL REPORT

2021



This has certainly been a year of fostering new beginnings for Mount Grace. With over 75% of our fundraising goal met for *The Land Forever* campaign, we are solidifying our commitment to protecting and stewarding the over 35,000 acres Mount Grace has conserved in the last 35 years. We are also launching our next 35 years with a renewed focus on landscape scale protection, climate action, and land justice.

This year has been one of tremendous transition. Amidst the disorientation of a global pandemic, we celebrated Leigh Youngblood's extraordinary 27-year tenure. Leigh's legacy includes building Mount Grace into an innovative conservation powerhouse. Mount Grace has pioneered approaches that have lasting influence on land trusts far beyond our region, such as collaborative conservation, whole farm affordability, and TerraCorps.

While taking the time to look back, we have also been striding forward. We submitted and were subsequently awarded a Landscape Partnership Program grant for the Greater Gales Brook Conservation Project. This project continues the Mount Grace tradition of aggregating multiple landowners and bringing together stakeholders to achieve a significant conservation impact protecting critical watershed and acreage. The urgency of increasing the pace of our conservation has never been more apparent than in the last eighteen months.

Land conservation is a necessity for our wildlife, our clean water, our climate, and our peace of mind. Thank you for your support of Mount Grace in continuing to persevere with this critical task.

Warmly,



A handwritten signature in black ink, appearing to read 'Max Feldman'.

Max Feldman
President



A handwritten signature in black ink, appearing to read 'Emma G. Ellsworth'.

Emma G. Ellsworth
Executive Director

The Land Forever campaign

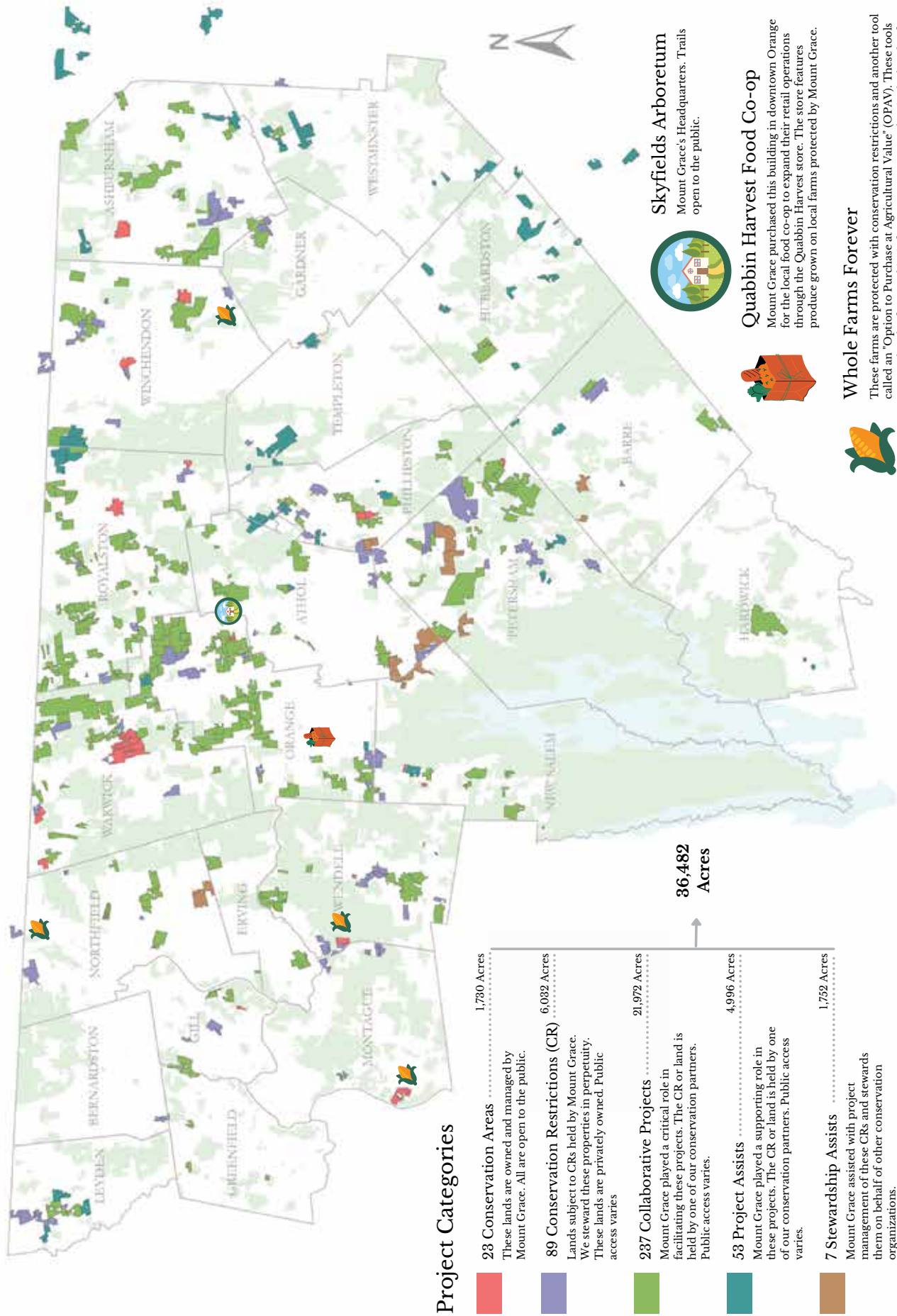
Land is protected primarily through passion. Family by family, community by community, project by project, conservation is done by people who have deep personal connections to the land.

It is increasingly essential that we act on our passion for farms, forests, clean air, and water.

To accomplish this, Mount Grace has launched *The Land Forever*: a \$3.5 million campaign to support the land and enable Mount Grace to meet our conservation and stewardship responsibilities over the next 35 years. As of this writing, Mount Grace has raised \$2.8 million towards the goal.

We ask you to join us to ensure the protection, enjoyment, and health of our region. Your campaign gift may be unrestricted or targeted to support one of three campaign priorities: supporting our ongoing work through a strategic endowment fund; adding meeting and event space at Skyfields Arboretum by building an accessible, energy efficient barn; and establishing the Leigh Youngblood Conservation Opportunity Fund, a revolving fund that will enable Mount Grace to respond quickly to potential projects.

The Richardson Overlook in Northfield exemplifies the conservation and stewardship threats, needs, and goals that The Land Forever campaign promises to address. © Paul Rezendes



Mount Grace's **Landscape Conservation Program** is the guardian of a rich mosaic of natural lands. We act quickly and strategically to safeguard our rural heritage and bolster our region's legacy of land conservation. Working with partners, we save the landscapes that our natural and human communities need to thrive. Together, we stitch these ecologically significant and locally important places into one connected and resilient landscape.

We spent the bulk of 2021 designing a multi-landowner, multi-partner conservation project. Through weekly meetings with Mass Audubon and dedicated local conservationists Mary Williamson and Alan Berman of Warwick, we carefully assembled a 750-acre project in Warwick, Orange, and Royalston. The Greater Gales Brook Conservation Project will protect thirteen diverse properties and help landowners achieve their long-held visions of protecting their land. The project will support local efforts to boost climate change resilience, and it will protect the vital waterways that sustain this forested landscape, drive local eco-tourism, and nourish myriad species of flora and fauna. The Greater Gales Brook Conservation Project is the result of collaborative, locally led community conservation. We are deeply grateful to the private landowners who chose to join this effort, and to our partners at Mass Audubon, the Town of Warwick, MA Department of Conservation and Recreation, MA Department of Fish and Game, and the Orange Conservation Commission for supporting this collaborative project and enabling us to submit a Landscape Partnership Program application in May.

This summer, we were ecstatic to learn our project had been awarded funding from the Massachusetts Landscape Partnership Program! Mount Grace will coordinate the grant to ensure that all properties are protected by the end of June 2022.

This grant award makes the project viable, but we will be working closely with Mass Audubon to raise the remaining funds necessary to complete this important initiative.

The project features a mix of conservation restrictions on land that will continue to be privately owned and properties that will be acquired in fee by a conservation partner. The result will be a variety of new public access opportunities, ensuring that the conserved lands will continue to be managed as woodlands, farms, and wetland habitat in perpetuity.



Melissa Cryan (MA Executive Office of Energy and Environmental Affairs), Brad Compton (Warwick Trails Group), Alan Berman (Warwick Town Forest Committee), Mary Williamson (Warwick Open Space Committee and Conservation Commission), and Kate Buttolph (Mass Audubon) on a site visit for the Landscape Partnership Program. Photo by Sarah Wells.

The **North Quabbin Regional Landscape Partnership**—an informal network of landowners, land trusts, planning agencies, academic institutions, and public agencies—is our primary mechanism for implementing this vision, as collaboration is the most powerful tool for achieving our mission.

We completed our 12th year collaborating with UMass-Amherst to deliver outreach programming for landowners across Massachusetts, funded in recent years by the Massachusetts Working Forest Initiative via the MA Department of Conservation and Recreation. Despite the pandemic, this year was perhaps the most productive and impactful year that we've had to-date. The pandemic forced us to become creative and to re-think our assumptions about outreach, and we made great strides in working with private landowners and local, volunteer conservationists. For the first time, we organized a 7-part webinar series for landowners. These monthly sessions drew 259 landowners, and the recordings are all available on masswoods.org. Many families participated in most or all of the workshops, allowing us to delve deeply into estate planning topics and develop relationships over the course of many months, instead of providing an overview through a single in-person workshop.

Our incredible TerraCorps member, Kate Sutcliffe, led the organization of the 6th Open Space Conference with partners and volunteers from all over Massachusetts. The 4-part weekly Zoom series featured afternoon workshops and informal evening networking sessions. This line-up attracted 447 attendees (another record-setting year!) who tuned in live, and the recorded sessions have been viewed on YouTube an additional 200 times. To complement the conference and capture more of the experiences of Open Space Committees, we also created the *Open Space Handbook*, which will be available as a printed resource later in 2021.

We continued to administer a small grants program to catalyze neighborhood and community-scale conservation. The Lincoln Land Trust, Southampton Open Space Committee, Chesterfield Conservation Commission, Williamstown Rural Land Foundation, Dracut Open Space Committee, and the Worcester County Conservation District all received small grants that resulted in direct engagement with more than 450 landowners. We were inspired by the creativity shown by our partners and their ability to work within COVID restrictions to catalyze meaningful conversations that are poised to translate into future land protection projects.

■ Sarah Wells

The **Community Conservation Program** partners with community members, organizations, and municipalities to prioritize and conserve lands that benefit the health and well-being of our region's people and their natural environment. We work to empower communities to enjoy and steward their natural resources and strengthen their connections to the natural world.

We are slated to complete two exciting community projects that will greatly expand recreational access in our region. In Montague, the children of Dr. Allen Ross, Daniel Ross and Emma Ellsworth, are donating their beloved two acres along the Connecticut River to Mount Grace. A canoe launch will be created and dedicated to the late Dr. Ross. Known as "Doc" by the hundreds of families he cared for in his medical practice, Dr. Ross was a former Mount Grace Board member, an avid canoer, and a fierce advocate for the land. His daughter Emma spent many summer days here swimming, paddling, and pitching a hammock in the shade of the silver maples growing along the riverbank. She now leads Mount Grace as Executive Director and is proud to honor her father's legacy by helping to ensure this property is enjoyed by future generations.

In Northfield, Barbara and Sam Richardson's property features what is arguably one of the most dramatic and scenic viewsheds in the region. Nestled between Northfield State Forest, the property features an incredibly popular segment of the New England National Scenic Trail. The trail leads hikers to the summit of Stratton Mountain, where they are met with sweeping, panoramic views of the forested landscape. The walk is not particularly steep, making this segment a perennial favorite for scout troops and others who are looking for a relatively short and sweet hiking experience. In addition to the stunning vista, the property also features the Richardson-Zlogar cabin. The Richardsons have been dedicated, thoughtful stewards of the land and are now passing the baton to Mount Grace to ensure that the trail and cabin remain accessible to the public. We look forward to partnering with the Appalachian Mountain Club to steward this unique resource.

Planning for climate resilience and mitigation has been a key focus for the Community Conservation program over the past year. Mount Grace formed a climate subcommittee with community members to develop a climate action plan. This plan will provide a roadmap of practices and projects to identify, conserve, and steward land to strengthen our region's resilience to the impacts of climate change. The plan also aims to bring Mount Grace's own carbon footprint closer to zero. We are continuing our work with towns that are participating in the state's Municipal Vulnerability Preparedness (MVP) grant program. The MVP program funds towns' planning and projects for climate resilience, and this year we supported Northfield, Warwick, and New Salem's plans, each of which identifies multiple nature-based climate solutions.

■ Aaron Nelson

Climate and Land Justice Program

This year marked the convening of a climate subcommittee to support staff in adapting Mount Grace's work of land protection and stewardship to be more effective and innovative in the context of global climate change. We also collaborated on a Land Amends project with graduate students from Yale University's School of Business and the Environment which investigated injustices of historical land ownership in our region. Conclusions from the climate subcommittee and the Yale students' research confirmed we needed more capacity to work on these two areas, and so we are excited to announce that we were able to fundraise for the creation of a new staff position, the Climate and Land Justice Specialist. They will integrate climate change and land justice into all aspects of our work while adding much needed capacity to our stewardship and conservation teams.

Through this new position, we will develop a climate action plan that will inform our strategic plan and strengthen the climate focus of our conservation work. We will identify areas of climate vulnerability (for example: flooding risk, invasive species, solar development pressures) in our region and produce projects that will help mitigate and adapt to these vulnerabilities. This, in turn, will help build our regional resilience to climate change and make sure that our beautiful lands can continue to be protected in perpetuity.

Additionally, this new position will allow us to take what we have learned from the Yale Land Amends report about the historical context of land ownership and consider how we can purposefully address and correct these injustices through thoughtful land conservation projects. These injustices come from times of land dispossession and disenfranchisement and include examples like the creation of the Quabbin Reservoir and colonial theft of land from Indigenous Nations. This includes acknowledging that the Mount Grace region is on Indigenous land that was taken involuntarily.

Land justice also means thinking about who uses our conserved land and identifying the barriers that prevent all people from using our land. Through this work, we are striving to make our land more inclusive and welcoming to all. Mount Grace believes that centering climate, land justice, and equity in all the work that we do is essential to being good stewards of the land.

■ Jenn Albertaine



Mount Grace co-sponsored a hike with Latino Outdoors at Facing Rock Wildlife Management Area in Ludlow in celebration of Latino Outdoors Week.

The **Stewardship Program** manages Mount Grace properties and monitors our conservation restrictions. Over the past 35 years, we have responded to increasing changes in the environment and the 23 communities we serve. We steward a mosaic of wildlife habitats and cultivated lands from mountain sides to farms, from wetlands to working forests. We encourage science-based and sustainable land management as well as outdoor recreation.

Considering the impact of climate change and creating important diverse wildlife habitats are central land management goals. Carbon storage and resiliency are incorporated into our updated forest management plans. Responding to the 2019 blow down at Song Memorial Forest in Warwick, and with advice and support from a neighboring landowner, we salvaged downed trees and cut trees from the property to form openings in the forest canopy. Young trees were cut to improve the health of larger carbon storing mature trees. These openings create much needed habitats for a variety of warblers, other birds, and moose as trees regenerate.

Many pollinator species face severe habitat loss. This Earth Day, more than 20 volunteers created four pollinator plots at Skyfields Arboretum to support native bees, butterflies, and moths. Plantings provide flowers as food for adult pollinators and include species used as hosts for rare moth and butterfly eggs. Our indispensable volunteers also found time to complete Landscape software training, help monitor our 88 conservation restrictions (CRs), pull invasive plants, install new signs, and repair trails, including hours of work on our accessible trail at Alderbrook Meadows.

CR landowners actively steward their land —growing local food, planting chestnut trees, and creating critical early successional forest

habitat. We connect our landowners with the resources they need to complete their own projects, including organizing work parties when extra hands are required.

Questions are also welcome from our community. Our projects and those of CR landowners can demonstrate management techniques and possibilities that can be used on other properties.

We are grateful for the assistance and knowledge shared with us by all our partners and excited to see what we can accomplish together in the coming year.

■ Tessa Dowling



Earth Day pollinator project in progress; bottom left: Completed pollinator plot

The **Community Engagement Program** strives to connect the people of our region and beyond with our work and with the land. Through events, media, and youth education programs, we engage and expand our community in learning about, caring for, and protecting the land.



Students at Dexter Park School marvel at the root system of wintergreen (*Gaultheria procumbens*) while clearing the trail.

Our TerraCorps member Meira Downie partnered with three local school districts – Athol/Royalston, Orange, and Northfield – to teach students about local flora and fauna. She organized an author read aloud and partnered with our Stewardship team to host masked outdoor workdays where students got their hands dirty making seed munchkins, raking and clearing a trail, and painting trail markers.

This year commenced our 35th Anniversary! We reflected on Mount Grace’s history and accomplishments by interviewing landowners of projects like Red Fire Farm in Montague and Muddy Pond in Westminster and writing articles on what the land means to them. We published our Taste of the Region Guide, featuring the many farms, breweries, and producers that make up our local food system. In light of the increased traffic of outdoor spaces due to the global pandemic and our overwhelming desire to find less crowded spots to recreate, we are publishing our 35 Places to Adventure Guide, which will introduce the public to many hidden land gems protected by Mount Grace.

Our 35th Anniversary Celebration at Tully Meadow Farm launched the public phase of *The Land Forever* campaign. We thanked and honored Leigh Youngblood and her 27-year commitment to Mount Grace, building it from humble roots into the formidable regional land trust with national impact that it is today. Our tribute video for Leigh can be seen at mountgrace.org.

■ Marielena Lima

Farm Conservation Program

For so many of us, this past year has amplified our understanding of the necessity of having access to locally grown food. Our Farm Conservation Program undertakes innovative projects that help sustain our local economy, increase community access to healthy local food, and build Massachusetts' food self-reliance by protecting farms for current and future generations. This year, we are actively working with six families to protect 309 acres of various farmland and adjacent woodlands.

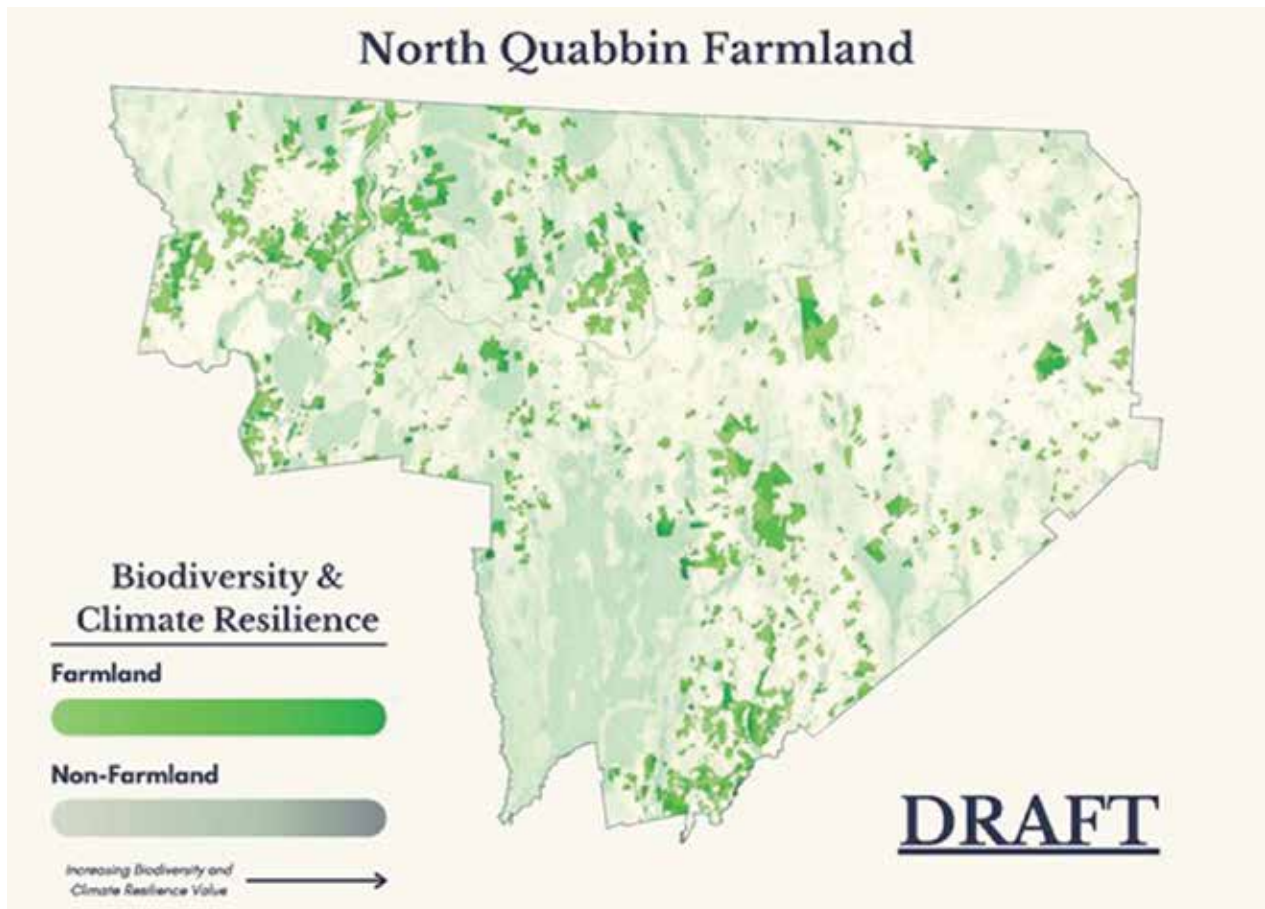
Six years ago, we sought to answer a deceptively simple set of questions: How many farms are in our 23-town region? Where are they? What are they growing? Are they conserved? Upon realizing that the answers to these questions were not readily available, we embarked upon a journey to understand how farms fit into our region's landscape. Each year, we focused on a set of towns and brought our questions to the farmers, agricultural commissions, and other community members of each town to better understand farming there. We have been translating this information into a set of maps that also highlight potential threats to farmland in our region. These maps will inform the future farm conservation efforts of Mount Grace, and we will make them available for use by towns during open space planning and conservation. Our Farmland Inventory project is also an invaluable tool to help answer a new set of questions: What does farm viability look like in our region? Who can access farmland? How can more people access local food?

Mount Grace also plays an important role in connecting farm owners with farm seekers. This year we developed new farm owner and farm seeker questionnaires to help us maintain consistency on referrals, keep track of farm transfer inquiries, and actively connect individuals. The questionnaires help guide us in facilitating connections between farmers, farm business planners, and farm succession professionals.

The Farm Conservation program continued coordinating two working groups. Through the Food Waste Reduction and Composting group, food waste management professionals from across Franklin and Worcester Counties were able to organize seven highly attended webinars and in-person workshops this year on a variety of composting techniques for home and business. The Orange Farmers Market working group had a successful season with new vendor interest despite the challenges provided by COVID restrictions and inclement weather.

Mount Grace celebrated our 7th year partnering with Quabbin Harvest. Mount Grace owns the building in downtown Orange where Quabbin Harvest operates a community-owned grocery store. In addition to being a source of local food, Quabbin Harvest is also an essential market for many small local farmers and food businesses. Through engaging in this partnership, we recognize that farmland protection is only part of the recipe for farm viability.

■ Rocio Lalanda



The above map is an early draft showing the value of North Quabbin farmland to biodiversity and climate resilience in the region.

Conservation Report

DiDonato, Wendell, 24.87 acres

In early January, Ray and Laurie DiDonato generously donated a conservation restriction (CR) to Mount Grace on their beloved property. The CR protects the western boundary of McAvoy Pond, a small, privately-owned pond that drains into nearby Lake Wyola. The newly protected property is across the street from the popular Town-owned Fiske Pond Conservation Area, a project Mount Grace supported in 2005.



Ways of Giving to Mount Grace

Thanks to all our supporters for partnering with Mount Grace to protect our farms, forests, water, and wildlife. Without your support, the conservation of our community resources would not be possible! Some creative ways that you can support our conservation and stewardship work include:

- **Monthly Giving** – Set up a monthly gift in any amount on your credit or debit card.
- **Real Estate Gifts for Resale** – Contact our staff about donating any type of real estate property located anywhere, especially non-conservation properties, to Mount Grace for resale to benefit conservation.
- **Website Donations** – Visit mountgrace.org anytime you like to make a gift to support our work.
- **Business Giving** – Mount Grace offers businesses a wide range of sponsorship opportunities and partnerships. Contact us to learn about sponsorship benefits.
- **Workplace Giving** – If your employer offers matching gifts, simply include your company's matching gift form with your contribution. If your employer is a partner with Earthshare, a federation of environmental charities, you may designate an automatic deduction from each paycheck to Mount Grace.
- **IRA Charitable Rollovers** – If you are 70½ or older, you can use the IRA charitable rollover to donate up to \$100,000 per year to Mount Grace and avoid paying income taxes on the gift.
- **Planned Gifts and Bequests** – Please contact us if you are interested in learning about estate planning efforts that can benefit both your family and conservation. If you have put us in your will at any level, we truly appreciate it. Please let us know so we may thank you in your lifetime!

■ David Kotker

We welcome your participation in the Mount Grace Margaret Power Biggs Society.



The Margaret Power Biggs Society recognizes individuals, businesses, organizations, and foundations contributing at least \$1,000 annually to Mount Grace Land Conservation Trust.

To learn more about how you can become part of the Margaret Power Biggs Society, contact Major Gifts and Grants Manager David Kotker at 978-541-1767 or kotker@mountgrace.org.

Grateful Thanks to Supporters of Mount Grace

Every contribution is special to us. Donors contributing to Mount Grace during the fiscal year (June 1, 2020 – May 31, 2021) are listed on these pages. We regret any unintentional omissions. Thank you to each and all.

The Margaret Power Biggs Society recognizes individuals, businesses, organizations, and foundations contributing at least \$1,000 annually to Mount Grace Land Conservation Trust. The generosity of Society members gives Mount Grace the resources to conserve the local landscape in a sustained manner that supports the rural character of the region.



CONSERVATORS (\$10,000 and above)

Anonymous (3)
Eleanor Alden and Tom Manning
William and Nancy Ames
Kim Ansin
Bob Busby and Maureen Conte
Community Foundation of
North Central Massachusetts
Community Foundation of
Western Massachusetts
Anne Covert
Ben and Susie Feldman
Fields Pond Foundation
Hollis Declan Leverett Memorial Fund
Bonnie House
John W. Boynton Fund
Leonard and Marjorie Johnson
William Lawrence III
Mifflin Memorial Fund
Gordon and Barbara Russell
David Spackman
Tortuga Foundation
University of Massachusetts Amherst
Edward and Linda Vitone

GUARDIANS (\$5,000–\$9,999)

Anonymous (1)
Susan Bredesen
Robert A. Clark and Fifi Scoufopoulos
David Foster and Marianne Jorgensen
Nansi and Leonard Glick
Greenfield Savings Bank
Louise Huppert
Mary Eliot Jackson
James N. and Jane B. Levitt
Moccasin Brook Fund
Diane Nassif
Morey Phippen
Robinson-Broadhurst Foundation
Elizabeth Schodek
Al and May Siano
The Skylight Fund

SUSTAINERS (\$2,500–\$4,999)

Anonymous (1)
Max and Lynne Feldman
Tony Ferragamo and Jean McCurdy
John Kramer and Elizabeth Lintz
Chris and Tamsin Wallace
Eric and Linda White
John M. and Ann Woolsey III
Leigh Youngblood

MARGARET POWER BIGGS SOCIETY (\$1,000–\$2,499)

Anonymous (5)
Myron and Kathy Becker
Polly Bixby and Karen Grzesik
Martin and Jennifer Bowers
Allen Tupper Brown and Sandy Brown
Edwin B. Cady and Beth Anderson
Michelle and George Caughey
Jeffrey Cole
Margaret M. Culley and
Kathleen Swaim
Joe and Kristy Delfausse
Ruah Donnelly and Steven Dinkelaker
Aaron Ellison
Henry and Aline Euler
Dr. Paul J. and Melinda Godfrey
Pamela and John Hanold
Nancy Hazard
Fred Heyes
Carol B. Hillman
Donald Kalischer
William King
Marguerite LaCroix and Joe Sumner
Johanna and Darlene Lawlor-Moore
Daniel Leahy and Julia Rabin
Jay Lord and Ruth Charney
Howard Mathison and L. Mari Rovang
James and Maureen Meausky
Taylor Milsal and Danny Hillis
Elaine Mroz
Eliot and Beth Nottleson
Scott Noyes
Steve and Kathy Rawson
Francis and Suzanne Renna
Nancy and Al Rose
Peter Samal
D. Fraser and Jean Sinclair
Sigrid Tishler
Craig and Jean Twohey
Jerry and Jean Wagener
John F. and Mary S. Williamson
Henry and Annie Woolsey

PROTECTORS (\$250–\$999)

Anonymous (4)
Nancy Allen
Edward Andrews
Town of Athol
Beth Bazler
Derek Beard
Albert and Bonnie Benjamin
Laurie Boosahda
Gary Brigham
Susan Campbell and Todd Fuller
Tom Chalmers and
Joan Chalmers-Meyer
David and Lynn Christianson
Elizabeth Colburn Mirkovic and
Lee Mirkovic
Kathleen Collins and George Northrop
Brad Compton
Constellation Community Champions
Bill Corey
Michael Currie
Anne Cutler-Russo and Tom Russo
Jaana Cutson and Paul Rothenberg
Raymond DiDonato
MaryAnn DiPinto
Bob and Nancy Durand
Norm and Cheryl Eggert
Emma and Tom Ellsworth
Bill and Laurel Facey
Rice B. Flanders
Nick and Margo Fleck
Norman Flye
Pauline Forman
Russell Gaulin
Alice and Rick Godfrey
Joan Goldberg
Wes and Nancy Green
Judith Hall and Alistair B. MacMartin
Carol Harley
Howard and Jinx Hastings
Mimi Hellen Jones
Cynthia and John Henshaw
Laura Herbert and Robert Fletcher
Jane Hillman and Siegfried Haug
Mark Horeanopoulos
Marie Claire and Pierre Humblet
Deborah Jackson Weiss
Thomas Jahl
Elda James
Eric and Caitlin Johnson
Carl Kamp and Alyce Mayo
Mary K. King and Shirley Keech
Babette Krolik and Harry Greenwald
Ned LaFortune
Pat Larson
LCHIP Land and Community Heritage
Investment Program
Mary and Craig Leslie
Diane Lincoln
Dean Lisiewicz
Mark Lite
Bryan Long and Ingrid Schatz

Eileen and Paul Mariani
Judy McLamb
Lis McLoughlin and Warren Ondras
Alan Medville and Roberta Miller
Paul Montero
Al Morgan and Jan Norris
Marta Nover
John O'Keefe and Lynne Stopen
Orange Chrysler Dodge Jeep Ram
Orange Oil Company
Whitfield and Linda Painter
Alice Pasterczyk
Personal Planetary Healing
Fund-Community Foundation of
Western Massachusetts
Joy Peterson Heyrman and John Heyrman
Chris and Meghan Picone
Ray Purington
Christopher S. Queen and
Alys Terrien-Queen
Curt and Pamela Rand
Bill and Mary Jane Rasku
Rise and John Richardson
Sam and Barbara Richardson
Daniel Ross
Nanulette Rudolph
Eva Schocken
Garth Shaneyfelt and Melinda Baughman
Lynn and Clinton Shaw
Regina and Kevin Skey
Phil and Erin Stevens
Marianne Sundell
Jennifer Sussmann
Brian and Suzanne Szyndlar
Olivia and Charles Tarleton
Jim and Pat Tedford
Jim VanNatta
Margaret and Jim Vohr
Eric Ward and Sarah Rainwater Ward
William Whitney
Allen Young and Dave Malin

STEWARDS (\$100–\$249)

Anonymous (11)
Ronald Aleman
Donna Allen
Walter and Mary Anair
Candace Anderson
Ellen Anderson
Michael April
Marny Ashburne
Kathleen and Jeff Auer
Annette Beauregard
Carla Becker
Charles and Sherry Berube
Camilla Blackman
Jeffrey A. Blanchard
Maureen Blasco
Claire Blatchford
Marlene Borer
Jassy and Tom Bratko
Lawrence Brown

Grateful Thanks

Jason Burbank
Jack Cadwell and Karro Frost
Lucy Candib and Richard Schmitt
Anne Cervantes
Marlynn Clayton
Eric Cole and Susan Clarke
Dave Conna
H. William and Christine Copeland
Peter Cross and Candace Lee Cross
James Culkeen and Jennifer Haggerty
Patricia Janelle and Steven Cutler
Ralph and Joy Cutter
Brock Cutting
Douglas and Julie Denise
Barry and Terry Desautels
Daniel Dibble
Jane Difley
Brian Donahue and Faith Rand
Anita Dube
Christine Duerring and Michael Italia
Buddy Dyer
Don and Chris Eaton
Diane Ellis
Nancy Evans
Warren Facey
Acquanetta Farrell
William J. and Susan H. Fitzgerald
Randy Florence
Donald Flye
Joyce and Hal Flynn
Melody Foti
Nathan Franzen
Dick French and Emily Samuels
Jim French
Margaret Frost
William Fullard
Peter Gagliardi and Rene Lake-Gagliardi
June Girouard
Richard D. Godin
Nancy Goodman
Lynne Goodnow
Celt Grant
Joe and Gail Graveline
Dorothy Clare Green
Janice and Peter Greenberg
Sara Griesemer
Wayne Hachey and Amy Fagin
Brian Hall
Ramona Hamblin
Stan Hartshorn
Davis Chapman Hawkowl
Jeffrey Hayer
James Hellen
Sharon Hogan
Philip Hubbard
Hubbardston Veterinary Clinic
Robert Hudson and Joy Gorzocosci
Michael Humphries
Anne Huppert
Cynthia and Raymond Jack
Ray Jackson
Meredith Janelle
James Javorsky
Diane Jinson
Evan Jones
Geoff Jones
Terry Kayne
Jonah Keane
Jack Kittredge and Julie Rawson
David Koester
David Kominz and Phyllis Damon Kominz

Hank Kozlowski
Steve and Janice Kurkoski
Susan Landry and Ann Meilus
William Lane
Ralph Lapinkas
Susan LaScala and Jeff Blomstedt
Michelle Lauzon
Robin Leger
Rich and Tally Lent
Fran Lewitter
Lexington Field and Garden Club
Mary Lightner
Christine and Clyde Long
Polly and Charles Longworth
David MacLean
Marcy Marchello
Susan and Ted Marshall
Rosemary Mathey
Mike Mauri
Carol and Robert Mayer
Ruth Mazurka
Scott McDonald
Sean McNeil
Ann Meilus, Esq.
Nancy and Alfred Mollitor
Genny Morley and Tom Wemett
Chris and Joann Mossman
Glenn Motzkin
Michael Naughton
Michael Novack and Penny Novack
Raymond Olander
John Olver
Susan Paju and Heidi Kleiner Strickland
Robert and Linda Paquet
Franklin D. Parmenter
Lloyd and Dorothy Parrill
Elizabeth Parson and D. Neil Gomberg
Arthur and Lynne Pinoneault
Charles and Natalie Plotkin
Richard and Anita Pollak
Kim and Russell Pratt
Theresa A. Quinn and
George Krasowski
Philip and Carla Rabinowitz
Liza Ramlow
Rattlesnake Gutter Trust
Richard F.J. Roark
Elizabeth A. Roberts
Rose 32 Bread LLC
Keith Ross and Louise Doud
Stephanie Selden
Susan and Harry Sharbaugh
Donald Simms and Magda Ponce-Castro
Norman Sims
Dave and Shelley Small
Paul and Lois Somers
Bruce Spencer and
Judith Northrup-Bennett
Cathy Stanton and Fred Holmgren
Jane Stein
Marion Stoddart
Charles R. and Leanne Stone, Jr.
Tim and Dorothy Storrow
Beth Sutcliffe
Alex Swan and Debra Gavant Swan
William Swanton
Linda Teel
Charles Thompson and Sarah Boy
Stephen Tobin and Nancy Hartle
Ann Townsend and Richard McCrae
Marie and David Urquhart

Don Verrastro and Heidi Dollard
Shirley Wagner
Thomas and Mary Weber
Doug Wessel and Tom Ziniti
Patricia D. White and James Nickel
Bruce and Eileen Whyte
Katherine Williams
Frank and Mary Wojciechowski
Katharine Wolff
David Wood and Diana Marston Wood
Cate Woolner
Elinor S. Wright
Richard and Lillian Young
Ellen Zibailo

INDIVIDUALS, FAMILIES AND BUSINESSES

Anonymous (13)
Steve Alves
Amazon Smile
Ralph Baker
Ricky Baruc and Deb Habib
Christy Bassett
Megan Bathory-Peeler
Donna Beck
Diane L. Beers
Alan Berman and Betsy Alkins
Lisa Berry
Lisa Bielefield
Pete and Alice Birney
Gene Bishop and Andy Stone
Sarah Bliss
Tobias Bloard
Julia Blyth
Elizabeth Bone
Alden Booth/The People's Pint
Sarah Boris
Jonathan Borus
Jo Ellen Boskind
Michael L. Bosworth
John Bowe
Barbara Bowen
Althea Bramhall
Kathleen Brault
Beth Brault
Linda Braun
Judith Bree
Helene Brooks
Sara Brown
Kevin Buckler
Katherine Buttolph
Rob Cairl
Henry Camosse
Richard and Suzanne Carpenter
Katie Carr
Deborah and Charles Cary
Mark and Janet Castriotta
Willa Caughey
Hilary Caws-Elwit
Joyce Chase
Lucinda Childs and Eric Vollheim
Joanna K. Chon
Genevieve Clark
John and Jeanne Clayton
Bob Clifford
Carol Coan
Robert J. Coleman

Clifford and Roxanne Cook
Margaret Cooley
Lisa and Lou Cormier
Kathy Coulson-McCarthy
Jodi Coverly
Frank Daniel
Richard Deane
Lucy deGozzaldi
Tabitha and Eric DeHays
Thomas Desbois
Thomas DeSellier
Curtis and Laurie Deveneau
Bruce Dezube
Michael and Tina D'Intinosanto
Sarah Dion
Mary Drake
Elizabeth and Christopher Duguay
Larry and Joan Duprey
Donovan and Meggin Eastman
Debora Edson
Linda Radwanski Eiben
Virginia and Oliver Fellows
Calvin and Fredericka Fellows
Robert Fijal
Lisa Finestone and David Skillicorn
David Flick
Fred Flood
Cynthia Furman
Marcia Gagliardi
Ronald Gagnon and
Mary Williams-Gagnon
Melissa Gallagher
Joanne Gardner and Tom Boisvert
Gary and Patricia Girouard
Peter Girouard
Carol Gowing
Mike and Mary Graney
Monica Green
Lydia Grey
Kris and Becky Gunderman
Miriam and Stanley Habib
Steve and Jennifer Haddad
Frank Hains
Philip Hanno and Barbara Shaw Hanno
Stephen and Jane Hardy
Mark Hart
Reginald and Laura Haughton
Joan Hazard
Florence Hellen
James and Barbara Herbert
Gail Higgins
Jessica and Steven Hill
Sarah Hodgkins
Mary Humphries
Dorcas H. Hurd
Raynold Jackson
Michael Jacobs
Rev. Philip C. Jacobs
Leon D. and Sandra M. Johnson
Bryan Johnson and Lynne French
David and Mary Johnson
Julianne and Barry Johnston
Nancy Karsberg
Lynne and Thomas Kellner
Michael and Laura Knight Kirkpatrick
Michael and Mary Kociela
Janet Kraft
Stephen and Suzanne Kulik
Diane Kurinsky and Steven Gross
Christine Kwitchoff
Labush

Grateful Thanks

Rocio Lalanda
Sita Lang and Anne Jemas
Joseph and Wendy Larson
Karen Latka
Rose and Jeff Lawrence
Michael and Leslie Leff
Karen and Dan Lenthall
John Lepore and Carolyn Flower-Lepore
Kim Levitch and Nancy Fournier
Mark Lewis and Shana Wagner
James and Cyndy Long
Hannah Lord
Rick and Dale Lucier
James MacPhee
Donna L. Madden
Kristina Madsen
Janet and Rick Marble
Myron and Suri Maron
James Maxwell
Michael McGrath
Gregory and Judy McGuane
Timothy McNeill and James Wilbur
Jim McRae and Sue O'Reilly-McRae
Barbara Mennard
Mary J Metzger
Anthony F. Mobilio
John N. and Laura Moore, III
Rita Motta
Francis & Marilyn Murphy
Jean Nelson Peterson
Network for Good
Joseph and Anne Olivari
Bob and Bertie O'Loughlin
Aileen O'Regan
Robert Osborne and Margot Parrot
Linda Overing and John Ryan
Hughes Pack
George Panos
Robert and Susan Pasteris
Chuck Perna
Patrick and Holly Perry
Jamie Pfisterer
Veronica Phaneuf
Susan and Stanley Piro
Sean and Jessica Pollock
Stephen Prajzner and Jill Cashman
Elliott R. Quint and Janice M. Hayden
Joseph and Sally Quinton
Joshua Rapp
Clifton and Arleen Read
Paul Rezendes and Paulette Roy
Karen and Dennis Rich
Kathy Richards
Winifred Rivard
Dee Robbins
Harry Rockland-Miller
Sam Rodgers
David and Nancy Romanowski
Johanna Rosen
Andy and Cynthia Rothschild
Diane Rouleau-Gardula and Robert Gardula
Leo Rousseau
Joseph and Taffy Ruggeri
Mary Lynn Sabourin
Raymond and Patricia Saiya
William Santini
Karen and Douglas Sargent
Sara Schley and Joe Laur
Arlene Schlueter
Mary Rose Scozzafava
Kathryn Service

Philip and Andrea Shaughnessy
Ruth Shaw
Peter W. Shea
Carolyn Shumway
Rebecca Slaughter
Prudence Smith and Sharon Gensler
Roger and Marsha Smith
Eric R. Smith
Douglas Spring
Patti Stanko
Mary Jo Stanley
Joseph and Dawn Steim
Elizabeth Stewart and Al Hill
Eric Stocker and Barbara Reily
Don and Janee Stone
Janice Stone
Robyn Sumner
Wako Takayama
Beverly Taylor
John and Rita Thompson
Jenny Tufts and Gary Rucker
Waino Tuominen
Sarah Underwood
Ivan Scott Ussach and Kathy Litchfield
Tim Van Egmond
Juliana Vanderwielen
Greta VanScoy
Andrew Vernon
Chris Vitello and Rachel Vitello
Libby Volckening
Beverly von Kries
Alice Ward and Phil Cacioppo
Mary Warren
Adrienne Watson
Joan Wattman
Gail and Gary Weiss
Linda and David Wells
Sarah Wells and Christian Hains
Bart Wendell
Hazel Wetmore
Mary Whitt
Lori Williams
Amanda Wilson
Brayton and Mary Alice Wilson
Joanne and Christopher Woodcock
Lita Wright and Murray Biggs
Micheale and Greg Wright
Paul and Sheila Youd
Mike and Karen Young



VOLUNTEERS

Volunteers and In-Kind Contributions between June 2020 – May 2021

Bill and Nancy Ames
Ron Amidon
Micha Archer
David Babik
Larry Bandolin
Donnie Barnes
Mike Barry
Bascom Hollow Farm
Bonnie Benjamin
Lisa Berry
Shelli Bischoff
Jeff Blanchard
Julia Blyth
Laurie Boosahda
Gary Brigham
Tom Brouillet

Sara Brown
Jack Cadwell
Ted Cady
Cary Memorial Library
Kelsey Cass
Tom Chalmers
Hong Chin
Russ Cohen
Arianna Collins
Anne Colturi
Robin Conley
Robert O'Connor
Len Crossman and Family
Star Cummings
Julie Davis
Dexter Park Innovation School
Brian Donahue
Jim Dowd
Norm Eggert
Charley Eiseman
Tom Ellsworth
Derek Estler
Ben and Susie Feldman
Susan Fitzgerald
Larry Fitzmaurice
Ricard Flematti
Donald Flye
Norm Flye
David Foster
Ada Fox
Friends of Alderbrook Meadows
Karro Frost
Clare Green
Kris Gunderman
John Hagar
Christian Hains
Reece Hains
Brian Hall
Sharon A. Harmon
John Holston
Jennifer Hughes
Michael Humphries
Michael Humphries
Will Hunting
Ray Jackson
Jerry Jaun
Jim Javorsky
Katherine Johnson
Carl Kamp
Diane Kane
Janice Kurkowski
Marguerite LaCroix
Marsha LaCroix
Pat Larson
Darlene Lawlor-Moore
Johanna Lawlor-Moore
Lexington Field & Garden Club
Barbara Livingston
Olivia Lukacic
Jami MacCartney
Dave MacLean

Mike Mauri
Jean McCurdy
Joanne McGee
David McKinley and Crew
Micky McKinley
Lis McLoughlin
Joan Meyer
Millers River Trout Unlimited
Diane Nassif
Gene
Sean Nolan
North Quabbin Trails Association
George Northrop
Noel's Nursery
Bob O'Connor
Alex Olson and Family
Eric Peterson
Chris Picone
New England Wetland Plants
Otter River Sportsman's Club
Porter Transportation
Rebecca M. Quiñones
Faith Rand
Vandana Rao
Steve Rawson
David Ray
Sandy Renna
Kathy Richards
Al and Nancy Rose
Keith Ross
Maggie Rouleau
Marilyn Ryngiewicz
Saul Shanabrook
Steve Shanley
David Singer
Dave Small
Jason Spaulding
Bruce Spencer
Cathy Stanton
Phil Stevens
Stone Cow Brewery
Jay Sullivan
Joseph Sumner
Steve Svoboda
Chuck and Livvy Tarleton
Linda Tomasi
Mark Trepanier
Tom Trepanier
Jenny Tufts
Sara Videtto
Jerry Wagener
Paul Wanta
Greg Watson
Charlotte Weltzin
Dan Jaffe Wilder
Amanda Wilson
Ellie Wilson
Max Wilson
David Graham Wolf
Patricia Woodcome
Corey Wrinn

Special Note of Thanks:

This year also brought the official retirement of our long-time attorney and friend, David J. Singer of Greenfield. David has been a brilliant advisor and steadfast champion of conservation since our inception in 1986. As a trained mediator, David intuitively understands how critical relationships are to the real estate transactions we do as a land trust. We are deeply grateful for the countless hours David has spent advising, training, brainstorming, drafting, re-drafting, tweaking, and joking with us. We love you!



MOUNT GRACE ANNUAL REPORT 2021

Preliminary Financial Summary

Year Ending May 31, 2021

REVENUES	FY2021 PRELIMINARY	FY2020
Gifts & Memberships	\$ 514,720	\$506,997
Grants	\$ 216,080	\$319,358
Program Service Fees	\$ 0	\$ 27,834
Investment Income	\$ 22,939	\$ 37,526
In-kind	\$ 5,222	\$ 2,425
Other	\$ 40,173	\$ 0
TOTAL REVENUES	\$ 799,134	\$ 894,141

OPERATING EXPENSES	FY2021 PRELIMINARY	FY2020
Landscape Conservation	\$ 120,422	\$183,344
Farm Conservation	\$ 111,718	\$113,286
Community Conservation	\$ 52,357	\$ 93,380
Land Stewardship	\$ 106,269	\$123,125
Engagement & Education	\$ 93,090	\$123,273
Administration	\$ 164,411	\$138,802
In-kind	\$ 5,222	\$ 2,425
Fundraising	\$ 134,478	\$108,687
TOTAL OPERATING EXPENSES	\$ 787,967	\$886,322
	\$ 11,167	\$ 7,819

STATEMENT OF FINANCIAL POSITION	FY2021 PRELIMINARY	FY2020
Total Current Assets	\$ 2,373,223	\$1,283,584
Conservation Land & Restrictions	\$ 1,516,128	1,451,078
Buildings & Equipment	\$ 326,792	332,782
TOTAL	\$ 4,216,143	3,067,444
Total Current & Long-Term Liabilities	\$ 180,325	272,331
Total Net Assets & Retained Earnings	\$ 4,035,818	2,795,113
TOTAL LIABILITIES & EQUITY	\$ 4,216,143	3,067,444



In Fiscal Year 2019, Mount Grace launched *The Land Forever* campaign. As of the end of Fiscal Year 2021, Mount Grace had raised \$2.4M in gifts, in-kind gifts, pledges, and intentions towards its \$3.5M campaign goal.

36,482 Acres Protected Since 1986

Mount Grace Land Conservation Trust

Our Mission: To benefit the environment, the economy, and future generations by protecting significant land and encouraging land stewardship.

We welcome your articles, photographs, comments, and suggestions. For information about becoming a member or to request a change of address, please contact our office at:

Mount Grace Land Conservation Trust

1461 Old Keene Road
Athol, MA 01331
978-248-2043 (tel)
978-248-2053 (fax)
landtrust@mountgrace.org
Visit our web site at
mountgrace.org



Follow us on Facebook, Instagram, and Twitter @MountGraceLCT



Mount Grace Staff

Emma G. Ellsworth, *Executive Director*
Sarah Wells, *Conservation Director*
Jenn Albertine, *Climate and Land Justice Specialist*
Rocio Lalanda, *Farm Conservation Program Manager*
Tessa Dowling, *Stewardship Manager*
Aaron Nelson, *Community Conservation Project Manager*
David Kotker, *Major Gifts and Grants Manager*
Liz Wilson, *Finance and Administration Manager*
Marielena Lima, *Communications and Engagement Coordinator*
James Holcomb, *Membership and Administration Coordinator*
Sharon Hogan, *Financial Consultant*

Mount Grace Board of Directors

Max Feldman.....Petersham
President
David Spackman.....Royalston
Vice President
Mimi Hellen Jones.....Petersham
Treasurer Washington DC
Joanne McGee.....Northfield
Clerk
Bob Busby.....Orange
Elda James.....Athol
Bryan Long.....Orange
Magda Ponce Castro.....Northfield
Steve Rawson.....Winchendon
Al Rose.....Phillipston
Al Siano.....Greenfield
Phil Stevens.....Barre